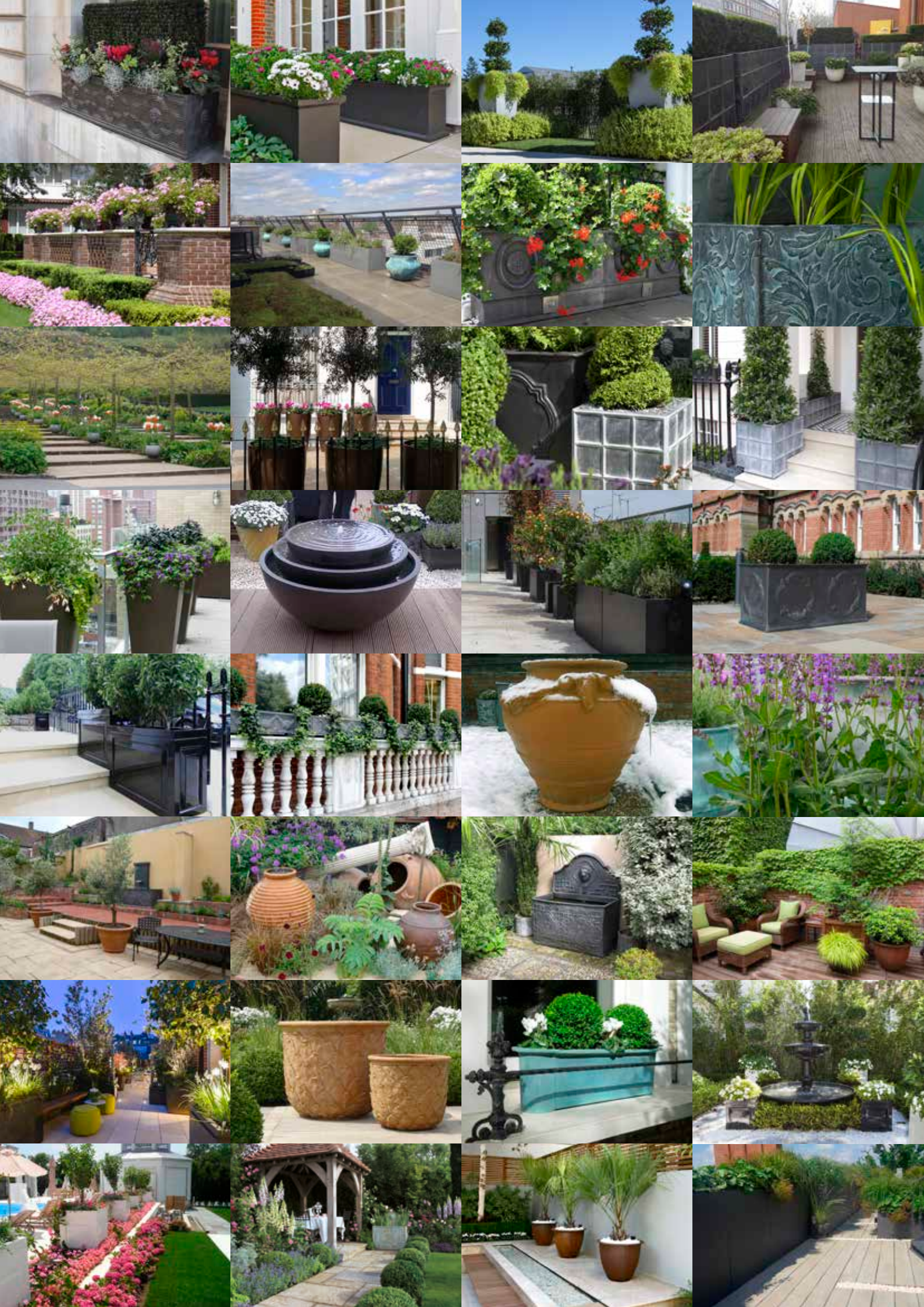




CAPITAL  
GARDEN PRODUCTS





# Capital Garden Products

For over forty years our skilled designers and craftsmen have produced decorative fibreglass plant containers that even the keenest eye cannot distinguish from the original materials.



### Why fibreglass and resin?

A wonderfully tough and versatile material, fibreglass is maintenance-free and light in weight. Completely frostproof and non corrosive, it is superior to terracotta, stone, wood and some metals. Impervious to all weather conditions our planters have been exported to gardens worldwide ranging from the Kingdom of Bahrain to the skyline of New York.



### Authentic finishes

Our production techniques are being continually researched and developed to produce new finishes to replicate a multitude of materials that are indistinguishable from the real thing. The extensive list of finishes includes antique brass, beaten copper, old penny bronze, terracotta, lead, aluminium, stone, concrete, limed wood, zinc and rust.



### The art of deception

Our skilled design and manufacturing team imitate and innovate products ranging from small lead planters to vast modern aluminium troughs. Our manufacturing technique allows the rustic finishes to age over time and gloss colours to retain their lustre. A Capital Garden Products planter is impossible to tell from its counterpart until you try to lift it!



### The real thing

To create an authentic reproduction, all of our masters are made in their original materials - clay, lead, wood, zinc or other metals. On occasion we have supplied these masters to the market. If you are searching for the real thing, please contact us and we will be happy to discuss your project.



### Custom design and sizes

Half of our work is custom made or made to measure, from designing entire gardens, balconies or roof terraces to one off stand alone pieces. We are happy to work from detailed plans to interpretations of a dream.



### Get in touch

Customers' queries are always welcome and dealt with as quickly as possible. Our website has news of new developments, permanent showrooms and forthcoming exhibitions around the world.

For further information or advice please  
CALL +44(0) 1580 201092  
VISIT [www.capital-garden.com](http://www.capital-garden.com)



# The Handmade Manufacturing Process

All of our products are handmade in our own workshops around the world.



## Making an original master

The process starts with an original master, made from wood, metal or clay

## Master made from wood

40 years ago we specialised in wooden trellis and planters. This expertise has given us the ability to make authentic timber reproductions in fibreglass including the classic Windsor and stunning Driftwood designs.



## Master made from metal

When manufacturing a lead or metal reproduction planter, a mould is made taken from a master made in the original material thus ensuring all the natural imperfections are carried through for an accurate representation.



## Master made from clay

Clay work is our speciality with our talented in-house sculptors creating beautiful one-off pieces from which we take our moulds. From our clay originals we have produced beautiful designs in our terracotta and Delphi white finishes. It is impossible to tell our lightweight terracotta from the heavy original until you try and lift it.



## Making the mould

A mould is then made from the master. The moulding techniques for fibreglass have not changed since its inception in 1932. We use these tried and tested methods to create perfect moulds every time as a fibreglass planter is only as good as the mould it is made from.



## The final process

All of our fibreglass planters are produced from the mould in the original finish. Nearly every planter goes through our finishing workshop, where our skilled team complete the final look of the planter.



## Finished product

All these processes culminate in the perfect planter which will last a lifetime.

# Custom Made & Bespoke

We regularly make simple tailor-made changes to our products. We can also create totally new designs.

## Making Small Changes To Existing Products

More than half of our work involves making small adaptations to existing products such as changing the length, width or height, adding false floors to planters or commemorating an occasion with custom initials or date.

This brief was to make a large, ornate water tank to collect rain water. We combined two of our standard Taj Tanks together to create this stunning and practical piece.



## Custom Made Bespoke Planters

No planter is too big or small. We can make any size of planter from small one-off pieces to large commercial specifications. All of our planters can be made in any colour or finish.

The brief for this project was to design a trough to fit the narrow steps of a smart London garden, providing privacy without taking up too much space.



## Worldwide Projects and Commercial Installations

We work with designers and architects on some of the most prestigious interior and exterior projects. Working to designers and architects' initial specifications, we provide on-site measuring and design services to the final installation.

We have workshops in England and the USA and export all over the world.

This picture shows a vast 2.5m diameter planter, being made for the London Olympic Village roof garden.





## Geometric and Modern Designs

Cubic, tapered, triangular, spherical, great and small, our geometric designs suit the clean lines of contemporary architecture and planting. Stone, aluminium and faux lead finishes reflect this modern style perfectly. With the surface smooth or textured, other metallic or any standard colour can be supplied.



FINISH Stone

### Lisbon

- S** DIA TOP 36 DIA BASE 22 H80cm CODE LISBON 3  
**M** DIA TOP 43 DIA BASE 25 H100cm CODE LISBON 4  
**L** DIA TOP 51 DIA BASE 28 H120cm CODE LISBON 4  
**XL** DIA TOP 60 DIA BASE 30 H150cm CODE LISBON 1



FINISH Grey Stone

### Geo Cone

- S** DIA 34 H80cm CODE GEOCONE 1  
**M** DIA 40 H100cm CODE GEOCONE 3  
**L** DIA 45 H120cm CODE GEOCONE 4



FINISH Bespoke RAL Colour



FINISH Bespoke RAL Colour



FINISH Black Textured



FINISH Black Textured







FINISH Aluminium Textured

### Geo Round

- S** DIA 47 H37cm CODE GEO 8S
- M** DIA 54 H52cm CODE GEO 8M
- L** DIA 55 H65cm CODE GEO 8L
- XL** DIA 70 H70cm CODE GEO 7

Our pots and planters come without drainage holes as standard, we are happy to pre-drill them on request

### Geo Sphere

- S** DIA 30cm CODE SPH 1
- M** DIA 45cm CODE SPH 2
- L** DIA 66cm CODE SPH 3
- XL** DIA 117cm CODE SPH 4



FINISH Stone

FINISH Aluminium Textured



FINISH Old Penny Bronze Textured

### Geo Vase

- S** DIA 40 H61cm CODE VASE 5
- M** DIA 54 H81cm CODE VASE 4
- L** DIA 70 H100cm CODE VASE 3
- XL** DIA 105 H150cm CODE VASE 2
- XXL** DIA 125 H209cm CODE VASE 1

These vases are only available in textured finish.



FINISH Faux Lead Textured



### Geo Square

- S** W30 D30 H60cm CODE SQU 1
- M** W35 D35 H80cm CODE SQU 2
- L** W40 D40 H100cm CODE SQU 3

### Geo Cube

- S** W38 D38 H38cm CODE CUBE 1
- M1** W54 D54 H54cm CODE CUBE 2
- M2** W61 D61 H61cm CODE CUBE 5
- L** W70 D70 H70cm CODE CUBE 3
- XL** W100 D100 H100cm CODE CUBE 4



FINISH Aluminium Textured



FINISH Faux Lead Textured

Our pots and planters come without drainage holes as standard, we are happy to pre-drill them on request

Geo Classic

- S w41 d41 h50cm CODE GEOC 3
- M w51 d51 h65cm CODE GEOC 2
- L w63 d63 h80cm CODE GEOC 1

Geo Tapered Square

- XS w35 d35 h28cm CODE GEO 6
- S w35 d35 h40cm CODE GEO 14
- M1 w42 d42 h55cm CODE GEO 2
- M2 w28 d28 h80cm CODE GEO 16
- L1 w33 d33 h100cm CODE GEO 17
- L2 w70 d70 h75cm CODE GEO 12
- L3 w50 d50 h100cm CODE GEO 1
- L4 w40 d40 h120cm CODE GEO 18
- XL w60 d60 h140cm CODE GEO 11
- XXL w88 d88 h175cm CODE GEO 9

Dimensions are taken at widest points.  
Refer to line drawings on pages 58.



FINISH Aluminium Textured

Geo Trough

- S w100 d50 h60cm CODE TRO 6
- M1 w120 d30 h50cm CODE TRO 1
- M2 w120 d30 h70cm CODE TRO 4
- L1 w140 d40 h40cm CODE TRO 2
- L2 w160 d60 h60cm CODE TRO 3
- L3 w140 d30 h70cm CODE TRO 5



FINISH Faux Lead Textured

Recommended finishes are as shown. Any of our finishes are available on request



FINISH Black Gloss



FINISH Faux Lead Textured



Geo Twister

- S** DIA 53 H33cm CODE TWIST 1  
**M** DIA 53 H53cm CODE TWIST 2  
**L** DIA 53 H79cm CODE TWIST 3

Our pots and planters come without drainage holes as standard, we are happy to pre-drill them on request



FINISH Aluminium Smooth

Geo Oval

- M** W71 D29 H40cm CODE OVAL 1  
**XL** W180 D68 H50cm CODE OVAL 2  
**XXL** W180 D68 H96cm CODE OVAL 3

FINISH Faux Lead Textured



FINISH Aluminium Smooth

FINISH Faux Lead Textured



FINISH Faux Lead Textured

Geo Bowl

- S1** DIA 60 H27cm CODE BOWL 0  
**S2** DIA 80 H36cm CODE BOWL 1  
**M** DIA 100 H45cm CODE BOWL 2  
**L** DIA 120 H56cm CODE BOWL 3



FINISH Aluminium Textured

Long Tom

- S** DIA 22 H65cm CODE LONGTOM 3  
**M** DIA 30 H85cm CODE LONGTOM 2  
**L** DIA 35 H100cm CODE LONGTOM 1



FINISH Black Textured

FINISH Stone

FINISH Black Textured

Bullet

- M** DIA 60 H60cm CODE BULLET



FINISH Black Textured





FINISH Stone

Beton

- M** w60 d60 h60cm CODE BET 60  
**L** w80 d80 h80cm CODE BET 80  
**XL** w100 d100 h100cm CODE BET 100



FINISH Stone

Fairhaven

- XS** w30 d30 h60cm CODE FAIR 1  
**S** w38 d38 h38cm CODE FAIR 4  
**M** w38 d38 h80cm CODE FAIR 2  
**L** w46 d46 h100cm CODE FAIR 3



FINISH Antique Brass



FINISH Beaten Copper

Pall Mall  
Troughs

- L** w195 d50 h50cm CODE PALL 3  
**XL** w223 d35 h50cm CODE PALL 4



FINISH Antique Brass

Pall Mall  
Planters

- M** w60 d60 h55cm CODE PALL 1  
**L** w80 d80 h75cm CODE PALL 2

Driftwood

- S** w60 d60 h50cm CODE DRIFT 60  
**M** w80 d80 h70cm CODE DRIFT 80  
**L** w100 d100 h90cm CODE DRIFT 100



FINISH Limed Wood



Recommended finishes are as shown. Any of our finishes are available on request



## Classic Designs

Our stunning collection of classic planters range from a small 20cm diameter round pot to a vast 2m long trough. Many of the designs have been created by our in-house design team and are therefore exclusive to us. All originals are made from wood, metal or clay and the craftsman's workings can still be seen in the finish.



### Grosvenor

**S1** W40 D40 H40cm CODE GROSVENOR 0

**S2** W50 D50 H50cm CODE GROSVENOR 1

**M** W60 D60 H60cm CODE GROSVENOR 2

**L1** W120 D30 H50cm CODE GROSVENOR 3

**L2** W90 D90 H90cm CODE GROSVENOR 4



FINISH Faux Lead

FINISH Antique Faux Lead

Our pots and planters come without drainage holes as standard, we are happy to pre-drill them on request

Recommended finishes are as shown. Any of our finishes are available on request





FINISH Antique Faux Lead

Downing Street  
Troughs

- S** w80 d40 h40cm CODE DOWN 3D
- M** w120 d40 h40cm CODE DOWN 3T
- L** w100 d50 h50cm CODE DOWN 2D
- XL** w150 d50 h50cm CODE DOWN 2T



FINISH Bespoke



FINISH Antique Faux Lead

Downing Street  
Planters

- S** w40 d40 h40cm CODE DOWN 3
- M1** w50 d50 h50cm CODE DOWN 2
- M2** w60 d60 h60cm CODE DOWN 1
- L1** w75 d75 h70cm CODE DOWN 4
- L2** w100 d100 h100cm CODE DOWN 0



FINISH Antique Faux Lead

Stuart  
Planters

- XS** w30 d30 h36cm CODE STU 3030
- S** w38 d38 h46cm CODE STU 3838
- M** w46 d46 h52cm CODE STU 4646
- M** w61 d61 h73cm CODE STU 6161



FINISH Faux Lead



Stuart  
Troughs

- S** w61 d24 h22cm CODE STU 6122
- M** w91 d24 h22cm CODE STU 9122
- L** w91 d30 h35cm CODE STU 4646
- XL** w130 d40 h50cm CODE STU 1340

Our pots and planters come without drainage holes as standard, we are happy to pre-drill them on request



FINISH Faux Lead



Elizabethan  
Planters

- S** w30 d30 h24cm CODE ELIZ 1212  
**M** w38 d38 h34cm CODE ELIZ 1513  
**L** w51 d51 h41cm CODE ELIZ 2004



FINISH Antique Faux Lead

Cromwell  
Planters

- S** w50 d50 h50cm CODE CROMWELL 1  
**M** w61 d61 h61cm CODE CROMWELL 2  
**L1** w76 d76 h76cm CODE CROMWELL 5  
**L2** w92 d92 h92cm CODE CROMWELL 3



FINISH Antique Zinc

Elizabethan  
Troughs

- M** w74 d38 h34cm CODE ELIZ 1513D  
**L1** w110 d38 h34cm CODE ELIZ 1513T  
**L2** w100 d51 h41cm CODE ELIZ 2004D  
**XL** w150 d51 h41cm CODE ELIZ 2004T

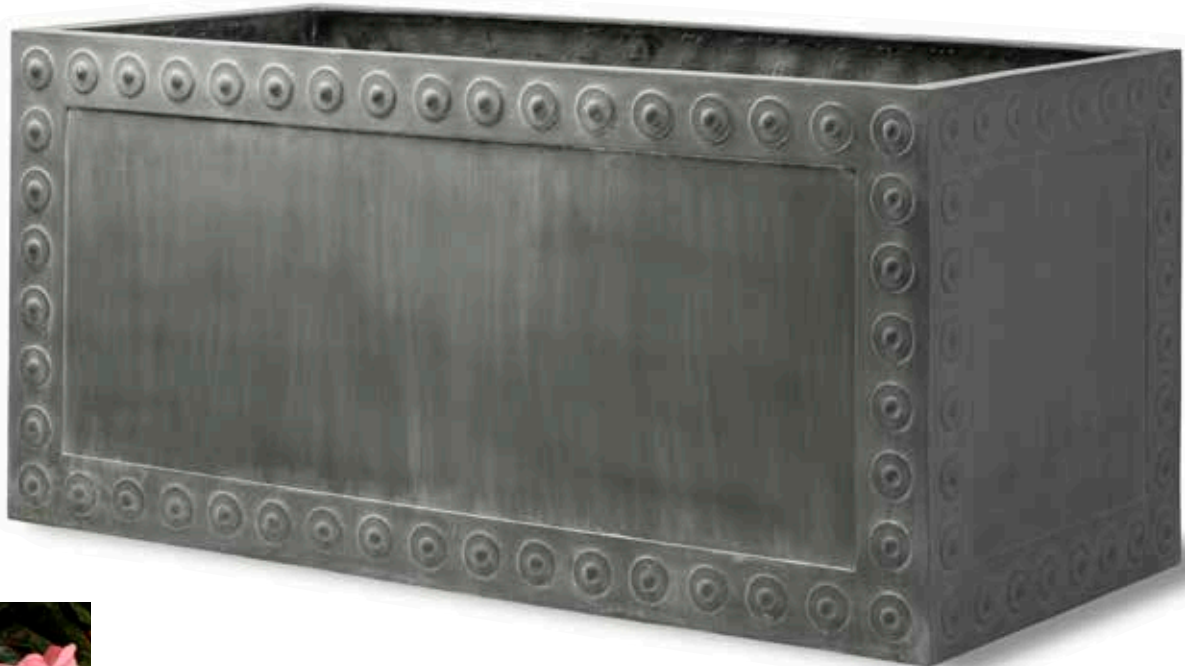


FINISH Faux Lead

Recommended finishes are as shown. Any of our finishes are available on request



FINISH Antique Faux Lead



FINISH Antique Faux Lead

Cromwell  
Trough

- L3** w132 d61 h61cm CODE CROMWELL 4



FINISH Antique Faux Lead

Our pots and planters come without drainage holes as standard, we are happy to pre-drill them on request



## Hampton Troughs

- L1** w91 d33 h39cm CODE HAM 9130  
**L2** w118 d61 h58cm CODE HAM 5858D  
**L3** w173 d61 h58cm CODE HAM 5858T  
**XL** w152 d78 h75cm CODE HAM 2802D  
**XXL** w222 d78 h75cm CODE HAM 2802T

Our pots and planters come without drainage holes as standard, we are happy to pre-drill them on request



FINISH Faux Lead

## Hampton Planters

- S** w38 d38 h38cm CODE HAM 3838  
**M** w61 d61 h58cm CODE HAM 5858  
**L** w78 d78 h75cm CODE HAM 2802  
**XL** w91 d91 h91cm CODE HAM 9191



FINISH Faux Lead

Recommended finishes are as shown. Any of our finishes are available on request

## Chelsea Troughs

- L1** w190 d30 h30cm CODE CHELSEA 2  
**L2** w190 d40 h40cm CODE CHELSEA 3  
**L3** w190 d50 h40cm CODE CHELSEA 4



FINISH Faux Lead

## Saxon

- M** w74 d54 h80cm CODE SAXON 1  
**L** w124 d52 h70cm CODE SAXON 2



FINISH Beaten Copper

## Provencal Trough

- S** w100 d45 h45cm CODE PROVENCALTR



FINISH Beaten Copper



FINISH Beaten Copper



## Windsor

**S** W38 D38 H35cm CODE WP 15**M** W48 D48 H38cm CODE WP 19**L** W91 D38 H38cm CODE WT 36**XL** W65 D65 H60cm CODE WP 25**XXL** W100 D100 H89cm CODE WP 40

FINISH Black Gloss

## Sloane

## Planters

**S** W30 D30 H36cm CODE SB 12**M** W38 D38 H46cm CODE SB 15**L** W46 D46 H52cm CODE SB 18**XL** W61 D61 H73cm CODE SB 24**XXL** W79 D79 H99cm CODE SB 31

FINISH White Gloss

Recommended finishes are as shown. Any of our finishes are available on request



## Chippendale

**S** W30 D30 H35cm CODE CH 12**M** W38 D38 H46cm CODE CH 15**L** W46 D46 H52 cm CODE CH 18

FINISH White Gloss



FINISH Faux Lead Textured

Sloane  
Troughs**M** W91 D30 H36cm CODE ST 36**XL** W137 D38 H46cm CODE ST 54

Our pots and planters come without drainage holes as standard, we are happy to pre-drill them on request



FINISH Black Gloss



FINISH Black Gloss



FINISH White Gloss



FINISH Faux Lead Textured



FINISH White Gloss





FINISH Bronzage

## Botanical

S W34 D34 H35cm CODE INDIT 12



FINISH Bronzage

## Adam

S W38 D38 H38cm CODE AD 15



FINISH Faux Lead

## Adam

S W30 D30 H23cm CODE AD 12



FINISH Terracotta

## Thames Bowl

XL DIA 100 H50cm CODE TB 4020



FINISH Terracotta



FINISH Terracotta

## Garland

S DIA 31 H22cm CODE GA 1409



FINISH Faux Lead

## Tudor Rose Trough

S W62 D22 H23cm CODE TUD 2508



FINISH Faux Lead

## Devil's Punch Bowl

XS DIA 28 H18cm CODE JD 1



FINISH Terracotta

## Citrus Troughs

S W30 D30 H18cm CODE CT 12

M W47 D22 H18cm CODE CT 18

L W90 D37 H34cm CODE CT 35



FINISH Terracotta

## Citrus Tub

S DIA 36 H18cm CODE CT 14



FINISH Faux Lead

## Victorian Trough

M W51 D25 H25cm CODE VIC 2010



FINISH Faux Lead

## Basket Weave

M W61 D41 H36cm CODE BASK 2416



FINISH Faux Lead

## Acanthus

M W66 D30 H33cm CODE ACANTHUS

## Oakleaf Troughs

M W91 D37 H35cm CODE OT 36

L W137 D38 H46cm CODE OT 54



FINISH Terracotta



FINISH Bronzage

## Dauphin

S W36 D20 H16cm CODE JD 2



FINISH Bronzage

FINISH Bronzage

## Half Tonbridge

S DIA 34 H24cm CODE T HALF 1309

## Tonbridge

S DIA 32 H22cm CODE T 1309



FINISH Terracotta





## Classic Designs

Our stunning collection of round planters ranges from a small 20cm diameter to a vast 2m diameter. Many of the designs have been created by our in-house design team and are therefore exclusive to us.

All originals are made in clay and the craftsman's workings can still be seen in the finish.



FINISH Terracotta

### Citrus

**S** DIA 36 H29cm CODE CT 1215  
**M1** DIA 45 H39cm CODE CT 1815  
**M2** DIA 56 H46cm CODE CT 1923  
**L** DIA 67 H60cm CODE CT 2428



FINISH Terracotta

### Plain

**S** DIA 36 H29cm CODE PLN 1215  
**M1** DIA 45 H39cm CODE PLN 1815  
**M2** DIA 56 H46cm CODE PLN 1923  
**L** DIA 67 H60cm CODE PLN 2428



FINISH Terracotta

### Oakleaf

**S** DIA 36 H29cm CODE OAK 1215  
**M1** DIA 45 H39cm CODE OAK 1815  
**M2** DIA 56 H43cm CODE OAK 1923



FINISH Terracotta

### Fern

**S** DIA 36 H29cm CODE FERN 1215  
**M1** DIA 45 H39cm CODE FERN 1815  
**M2** DIA 56 H46cm CODE FERN 1923



FINISH Terracotta

### Ivy

**S** DIA 36 H29cm CODE IVY 1215  
**M1** DIA 45 H39cm CODE IVY 1815  
**M2** DIA 56 H46cm CODE IVY 1923  
**L** DIA 67 H60cm CODE IVY 2428



FINISH Terracotta

### Shimmer

**S** DIA 35 H33cm CODE SHIM 1314  
**M** DIA 43 H43cm CODE SHIM 1717  
**L** DIA 56 H58cm CODE SHIM 2322



FINISH Terracotta

### Lattice

**M** DIA 43 H35cm CODE LS2113



FINISH Terracotta

### Fleur de Lis

**S** DIA 60 H50cm CODE FLEUR 1  
**M** DIA 39 H36cm CODE FLEUR 2



FINISH Rust

FINISH Delphi White

FINISH Terracotta

### Tulip

**S** DIA 25 H40cm CODE TULIP 3  
**M** DIA 37 H60cm CODE TULIP 2  
**L** DIA 45 H80cm CODE TULIP 1





Pineapple

- S** DIA 23 H18cm CODE PINE 3  
**M** DIA 53 H46cm CODE PINE 2  
**L** DIA 80 H69cm CODE PINE 1



FINISH Terracotta

Bollinger

- L** DIA 75 H75cm CODE BOLL 3  
**XL** DIA 100 H100cm CODE BOLL 2  
**XXL** DIA 120 H125cm CODE BOLL 1



FINISH Stone

Fishscale

- M** DIA TOP 56 H46cm CODE FS 2219  
**L** DIA TOP 70 H60cm CODE FS 2824



FINISH Bronzage

Fishscale Bowl

- L** DIA TOP 95 H64cm CODE FS 3825



FINISH Bronzage



FINISH Bronzage

Large Pot

- M** DIA 58 H48cm CODE LP 23  
**L** DIA 97 H61cm CODE LP 38  
**XL** DIA 134 H85cm CODE LP 56  
**XXL** DIA 160 H117cm CODE LP 63



FINISH Terracotta



Bell Jar

- S** DIA 51 H39cm CODE BL 5139
- M** DIA 61 H46cm CODE BL 6146
- L** DIA 81 H45cm CODE BL 8145
- XL** DIA 85 H62cm CODE BL 8562



FINISH Beaten Copper



FINISH Beaten Copper

Norman

- S** DIA 50 H36cm CODE NORMAN 3
- M** DIA 61 H46cm CODE NORMAN 2
- L** DIA 75 H56cm CODE NORMAN 1



FINISH Beaten Copper



FINISH Rust

Our pots and planters come without drainage holes as standard, we are happy to pre-drill them on request

Ram's Head

- L** DIA 91 H81cm CODE RA 2424



FINISH Terracotta



FINISH Beaten Copper



FINISH Antique Faux Lead

Recommended finishes are as shown. Any of our finishes are available on request

Sussex

- L** DIA 91 H81cm CODE SU 3236



FINISH Terracotta



FINISH Terracotta





FINISH Antique Zinc

Stuart

**M** DIA 48 H53cm CODE STUART R



FINISH Antique Zinc

Grosvenor

**M** DIA 48 H53cm CODE GROSVENOR R

Arabesque

- S** W40 D40 H35cm CODE ARAB 1
- M** W50 D50 H45cm CODE ARAB 2
- L** W60 D60 H53cm CODE ARAB 3

Recommended finishes are as shown. Any of our finishes are available on request



FINISH Antique Brass



FINISH Antique Zinc

Dolly

**S** DIA TOP 40 DIA MID 44 H60cm CODE DOLLY



FINISH Antique Faux Lead

Ship

**M** DIA 51 H46cm CODE SP 2001



FINISH Beaten Copper

Citadel

- S** DIA 61 H28cm CODE CITADEL 1
- M** DIA 85 H36cm CODE CITADEL 2
- L** DIA 100 H45cm CODE CITADEL 3

Our pots and planters come without drainage holes as standard, we are happy to pre-drill them on request



FINISH Antique Zinc

Trafalgar

- S** DIA 48 H42cm CODE TRAFR 1
- M** DIA 70 H70cm CODE TRAFR 2
- L** DIA 80 H60cm CODE TRAFR 3

Botticelli

**XL** DIA TOP 72 DIA WIDEST 85 H55cm CODE BOTTICELLI



FINISH Rust



FINISH Antique Brass

FINISH Antique Faux Lead



Tudor Rose

- S** DIA 40 H21cm CODE TU 1602
- M1** DIA 40 H42cm CODE TU 1601



# Mediterranean Collection

Our search of the farms, vineyards and ports of the Mediterranean has brought together this remarkable collection of vessels for wine, olive oil and molasses, and our reproductions are as true in detail as possible. Optional metal stands are available.



Mediterranean 2  
M DIA 44 H56cm CODE MED 2  
Shown on optional metal stand

Mediterranean 4  
L DIA 62 H72cm CODE MED 4  
Shown on optional metal stand

Mediterranean 5  
L DIA 47 H52cm CODE MED 5



Mediterranean 3  
L DIA 74 H54cm CODE MED 3

FINISH Delphi White

FINISH Bespoke Terracotta

## Beehive

L DIA 61 H82cm CODE BEE 3224



FINISH Terracotta

FINISH Delphi White

FINISH Terracotta

Cretan Oil Jar  
L DIA 75 H100cm CODE CRET 3828



FINISH Delphi White

FINISH Bespoke Terracotta

Mediterranean 1  
L DIA 52 H77cm CODE MED 1  
Shown on optional metal stand



FINISH Terracotta

Our pots and planters come without drainage holes as standard, we are happy to pre-drill them on request





## Window Boxes

Our fibreglass window boxes are wonderful imitations of antiques and contemporary originals. Due to the lightweight nature of fibreglass they can be easily placed on window sills, balustrading, roof terraces or hung from brackets and railings.

To see the range of brackets see page 62.



FINISH Faux Lead Textured

### Sloane

**S** W76 D18 H20cm CODE SWB 30

**M** W91 D23 H23cm CODE SWB 36

**L** W122 D20 H20cm CODE SWB 48



FINISH White Gloss



FINISH Antique Faux Lead

### Grosvenor

**M** W91 D23 H23cm CODE GROSWBOX 2



### Chelsea

**M** W97 D22 H22cm CODE CHELSEA 1

FINISH Faux Lead Smooth



FINISH Faux Lead Textured

### Geo

**S** W40 D20 H25cm CODE WBOX 3

**M** W70 D20 H25cm CODE WBOX 2

**L** W100 D20 H25cm CODE WBOX 1

Recommended finishes are as shown. Any of our finishes are available on request



FINISH Faux Lead





FINISH Faux Lead

Tudor Rose

**S** W62 D22 H23cm CODE TUD 2508



FINISH Faux Lead

Pinot Noir

**M** W100 D22 H25cm CODE PINOT 1



FINISH Faux Lead

Swag

**S** W61 D20 H21cm CODE SWAG 2402

**M** W91 D20 H21cm CODE SWAG 3603



FINISH Faux Lead

Hampton

**S** W61 D31 H23cm CODE HAM 6122

**M** W92 D31 H23cm CODE HAM 9122



FINISH Terracotta

Oakleaf

**S** W61 D23 H24cm CODE OAK 24

**M** W91 D22 H23cm CODE OAK 36



FINISH Bronzage

Wheatsheaf

**S** W61 D27 H21cm CODE WH 24

**M** W91 D27 H21cm CODE WH 36



FINISH Beaten Copper

Provencal

**L** W100 D27 H27cm CODE PROVENCAL WB



FINISH Antique Brass

Pall Mall

**L** W100 D20 H25cm CODE PALL WB



Brackets

We supply black powder-coated metal brackets to fit the majority of our window boxes. These are adjustable and can be used for hanging window boxes against walls, balconies and railings.



FINISH Faux Lead

FINISH Antique Faux Lead



FINISH Faux Lead

Stuart

**S** W61 D24 H22cm CODE STU 6122

**M** W91 D24 H22cm CODE STU 9122



FINISH Faux Lead



FINISH Faux Lead



FINISH Faux Lead



## Water Tanks & Water Features

Romantic and practical... use these versatile tanks as rainwater reservoirs or large planters. In these days of water shortages, collecting rainwater is a must for many gardens. Fitted with a backplate and fountain they also provide the sound and movement of water. We can also supply lids, taps, wheels, false floors and water pumps when required.

### George & Dragon

XL W96 D46 H66cm CODE GD 3618

Recommended finishes are as shown. Any of our finishes are available on request



FINISH Antique Faux Lead



FINISH Antique Faux Lead

### George III Double

XL W143 D71 H75cm CODE GIII 2829D





FINISH Antique Faux Lead

George III  
L W74 D75 H75cm CODE GIII 2829



FINISH Antique Faux Lead

Cromwell  
L W76 D76 H76cm CODE CROMWELL 5  
XL W92 D92 H76cm CODE CROMWELL 3



FINISH Antique Faux Lead

James II  
L W73 D73 H76cm CODE JII 2801



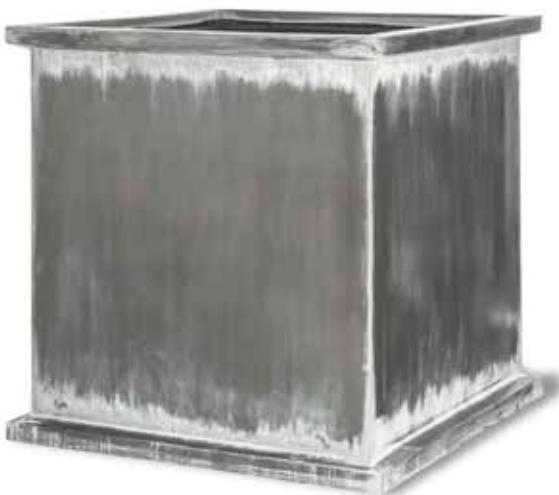
FINISH Faux Lead

Hampton  
L W78 D78 H75cm CODE HAM 2802  
XL W91 D91 H91cm CODE HAM 9191



FINISH Antique Faux Lead

Downing Street  
L2 W100 D100 H100cm CODE DOWN 0

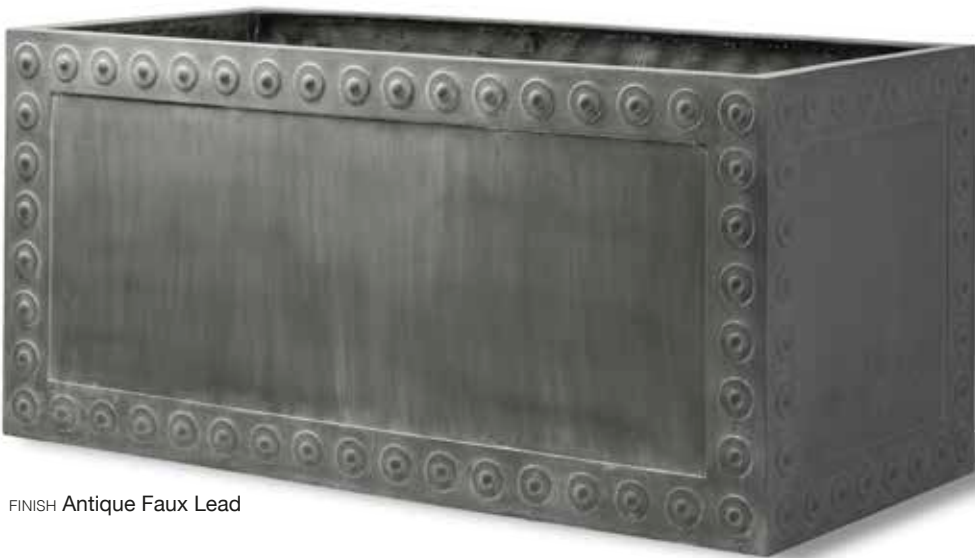


FINISH Antique Faux Lead

Grosvenor  
XX W90 D90 H90cm CODE GROSVENOR 4

Our pots and planters come without drainage holes as standard, we are happy to pre-drill them on request

Cromwell  
L1 W132 D61 H61cm CODE CROMWELL 4



FINISH Antique Faux Lead



FINISH Faux Lead

Hampton  
XL W152 D78 H75cm CODE HAM 2802D  
XXL W222 D78 H75cm CODE HAM 2802T



FINISH Antique Faux Lead



FINISH Antique Faux Lead



FINISH Faux Lead





Hampton Fountain

L W80 D40 H86cm CODE HAM 9112

FINISH Faux Lead



These tanks are available with, or without the fountain backplate

- George & Dragon
- Taj Tank 1
- James II

We recommend that fountain backs are attached to a wall or fence for additional support.

James II

Tank XL W129 D74 H76cm CODE JII 4901

Fountain Backplate W130 D70 H76cm CODE JIIBP 4901



FINISH Faux Lead



FINISH Bronzage

George & Dragon

Tank XL W96 D46 H66cm CODE GD 3618

Fountain Backplate W95 H54cm CODE GDBP 3618



FINISH Bronzage

Taj Tank 1 & Fountain

Tank W63 D48 H72cm CODE TAJ 2319

Fountain Backplate W63 H75cm CODE TAJBP 2319



FINISH Terracotta

Taj Tank 2

L W95 D63 H72cm CODE TAJ 2338



FINISH Faux Lead



FINISH Faux Lead



FINISH Faux Lead

Our pots and planters come without drainage holes as standard, we are happy to pre-drill them on request





FINISH **Bronzage**

**Water Babies**

**S** W41 D21 H71cm CODE FO 14



FINISH **Terracotta**

**Petal**

**L** W49 D24 H79cm CODE FO 26



FINISH **Terracotta**

**Dutch Master**

**M** W41 D16 H74cm CODE FO 12



FINISH **Terracotta**

**Taj Corner**

**L** W61 D48 H100cm CODE FO 18



FINISH **Bronzage**

**Flower**

**M** W51 D15 H89cm CODE FO 08



FINISH **Faux Lead**

**Ram's Head**


**M** W51 D20 H75cm CODE FO 09



FINISH **Faux Lead**

**Gargoyle**

**L** W50 D25 H90cm CODE FO 22



FINISH **Faux Lead**

**Dolphin**

**M** W51 D24 H74cm CODE FO 01



FINISH **Bronzage**



FINISH **Terracotta**

**Great Dolphin Bowl**

**XL** W94 D52 H97cm CODE FO 13



FINISH **Faux Lead**

**Great Lion Bowl**

**XL** W94 D52 H97cm CODE FO 10

**Bowl Fountain**

**XS** DIA 60 H27cm CODE BOWL 0 FTN


**S** DIA 80 H36cm CODE BOWL 1 FTN

**M** DIA 100 H45cm CODE BOWL 2 FTN

**L** DIA 120 H56cm CODE BOWL 3 FTN




FINISH **Aluminium Textured**



FINISH **Bronzage**



FINISH **Faux Lead**



FINISH **Faux Lead Textured**



## Urns and Pedestals

Urns create an eye-catching focal point, especially on one of our matching pedestals. On a wall, or resting on the ground in a flower border, they create additional interest whether planted or unplanted. From small table-top sizes to large urns, the designer or flower arranger will appreciate the light weight of fibreglass.

Recommended finishes are as shown. Any of our finishes are available on request



FINISH Bronzage

### Medici Urn

**L** DIA 60 BASE DIA 29 H71cm CODE MEDI 3023

### Pedestal 4

**L** DIA 58 TOP DIA 40 H80cm CODE CODEHERE



FINISH Terracotta

### Oakleaf Urn

**XXL** TOP DIA 107 BASE W61 H134cm CODE OAK 4353

### Pedestal 10

**XL** TOP W64 BASE W69 H82cm CODE PED 10





Roman 1 Urn

XXL DIA 92 BASE W46 H122cm CODE RO 3648

Pedestal 12

XL W60 D60 H110cm CODE PED 12

Roman 2 Urn

XXL DIA 127 BASE W 46 H86cm CODE RO 4833



FINISH Stone

Pedestal 54

XL W54 D54 H54cm CODE PED54



FINISH Silver Leaf



FINISH Beaten Copper

Recommended finishes are as shown. Any of our finishes are available on request

Fluted Urns

- S** DIA 28 BASE W14 H36cm CODE FLU 1220  
**M** DIA 40 BASE W20 H46cm CODE FLU 1605  
**L** DIA 59 BASE W27 H75cm CODE FLU 2330



FINISH Faux Lead

FINISH Faux Lead

FINISH Faux Lead

Pedestal 3

L TOP W22 BASE W33 H71cm CODE PED 3

Pedestal 11

L TOP W32 BASE W45 H100cm CODE PED 11

Pedestal 9

L TOP W33 BASE W46 H60cm CODE PED 9



FINISH Silver Leaf



Our pots and planters come without drainage holes as standard, we are happy to pre-drill them on request

Cache Pot Vases

- S** w18 d18 h35cm CODE VA 1
- M1** w27 d27 h50cm CODE VA 2
- M2** w42 d42 h71cm CODE VA 3
- L** w54 d54 h88cm CODE VA 4



FINISH Antique Brass

FINISH Faux Lead



Queen Anne Urn

**M** TOP DIA 42 BASE DIA 32 H46cm CODE ANNE 1701



FINISH Bronzage

Pedestal 4

**XL** TOP DIA 40 BASE DIA 58 H80cm CODE PED 4



FINISH Bronzage

French Tazza Urn

**M** TOP DIA 52 BASE DIA 22 H39cm CODE TAZ 2115



FINISH Faux Lead

Grecian Urn

**M** DIA 43 BASE W22 H51cm CODE GRE 1703



FINISH Faux Lead

Ewhurst Vase

**M** DIA 45 BASE W26 H68cm CODE EV 1727



FINISH White

Pedestal 11

**XL** TOP W32 BASE W45 H100cm CODE PED 11

Pedestal 9

**XL** TOP W33 BASE W46 H60cm CODE PED 9



FINISH Faux Lead

Small Urn

**S** DIA 29 BASE W12 H20cm CODE JD 4



FINISH Stone

Bodium Urn

**M** DIA 57 BASE W28 H56cm CODE BOD 2222

Recommended finishes are as shown. Any of our finishes are available on request



Recommended finishes are as shown. Any of our finishes are available on request



FINISH Stone



FINISH White Gloss

Pedestal 1

**M** TOP DIA 25 BASE 32 H84cm CODE PED 1



FINISH Black Gloss

Pedestal 2

**L** TOP DIA 33 BASE W32 H121cm CODE PED 2



FINISH Terracotta

Pedestal 3

**M** TOP W22 BOTTOM W33 H71cm CODE PED 3



FINISH Stone

Pedestal 4

**M** TOP DIA 40 BASE DIA 58 H80cm CODE PED 4



FINISH Faux Lead

Pedestal 5

**S** W21 D21 H34cm CODE PED 5



FINISH Stone

Obelisk

**XL** W54 D54 H252cm CODE OBEL 2



FINISH Bronzage

Pedestal 9

**M** TOP W46 BASE W46 H60cm CODE PED 9



FINISH Bronzage

Pedestal 6

**S** TOP W40 BASE W29 H58cm CODE PED 6



FINISH Terracotta

Pedestal 7

**M** W52 D52 H76cm CODE PED 7



FINISH Stone

Pedestal 8

**M** TOP DIA 31 BASE DIA 43 H79cm CODE PED 8



FINISH Aluminium Textured

Pedestal 54

**M** W54 D54 H54cm CODE PED 54



FINISH Terracotta

Pedestal 10

**M** TOP W64 BASE W69 H82cm CODE PED 10



FINISH Faux Lead

Pedestal 11

**L** TOP W32 BASE W45 H100cm CODE PED 11



FINISH Antique Brass

Pedestal 12

**L** TOP W60 BASE W60 H110cm CODE PED 12

Column

Bespoke columns made to order



# Range of Finishes

All of our planters are made in the original colour therefore they cannot chip or flake revealing a different colour below. As an ongoing process we are creating new and 'special' finishes to order. Colours may vary due to the nature of our hand finishing and the accuracy of printing.



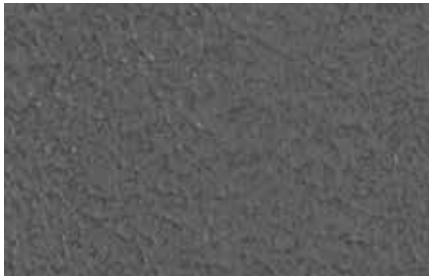
Faux Lead



Antique Faux Lead



Antique Zinc



Faux Lead Textured



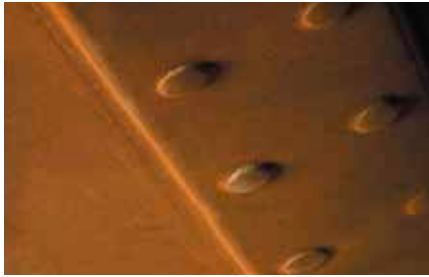
Bronzage



Terracotta



Delphi White



Rust



Old Penny Bronze Smooth



Old Penny Bronze Textured



Aluminium Smooth



Aluminium Textured



Grey Stone



Bath Stone



Antique Brass



Beaten Copper

## Special Hand Finishes

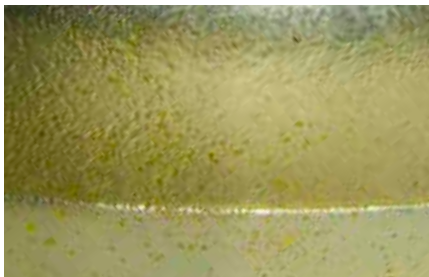
We specialise in realistic reproductions of multiple materials. Alongside our standard finishes we have a specialist in-house team that can create a variety of alternative finishes ranging from Old Gold Verdigris to Silver Leaf.



Bespoke Terracotta



Old Gold Verdigris



Gold Leaf



Silver Leaf



Real Leather

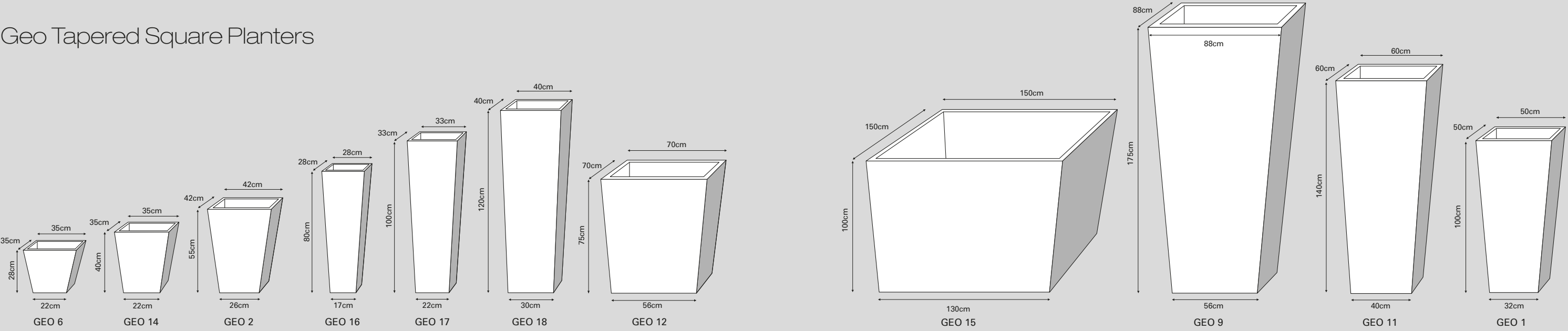
## All RAL Colours Possible

All of our planters are available to order in any RAL colour, in either a textured matt or gloss finish. There are over 100 different colours to choose from their website: [www.colorplas.com](http://www.colorplas.com)

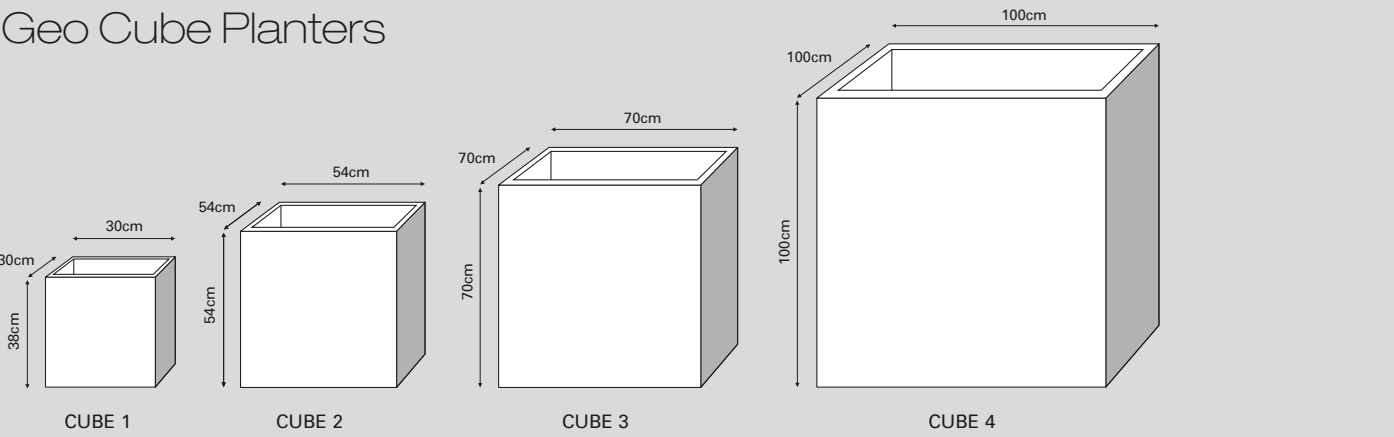
RAL 1000	RAL 1028	RAL 3004	RAL 4003	RAL 5012	RAL 6000	RAL 6027	RAL 7024	RAL 7036	RAL 8015
RAL 1007	RAL 2000	RAL 3012	RAL 4010	RAL 5014	RAL 6011	RAL 7002	RAL 7032	RAL 8000	RAL 8023
RAL 1016	RAL 2012	RAL 4001	RAL 5000	RAL 5021	RAL 6021	RAL 7009	RAL 7033	RAL 8004	RAL 8028



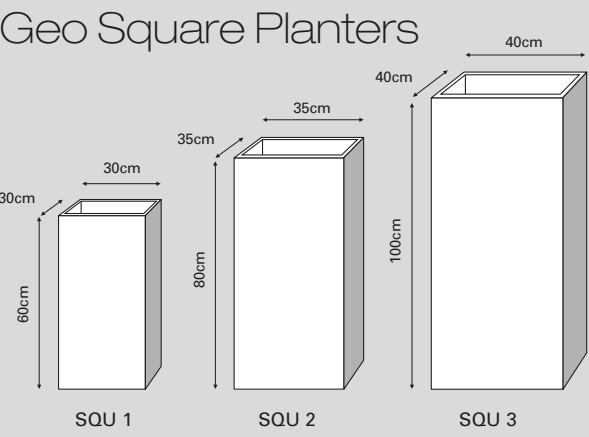
Geo Tapered Square Planters



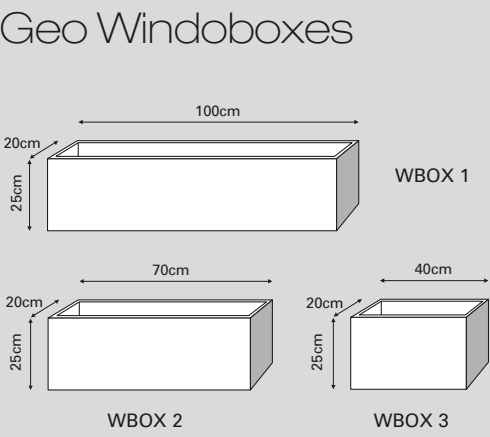
Geo Cube Planters



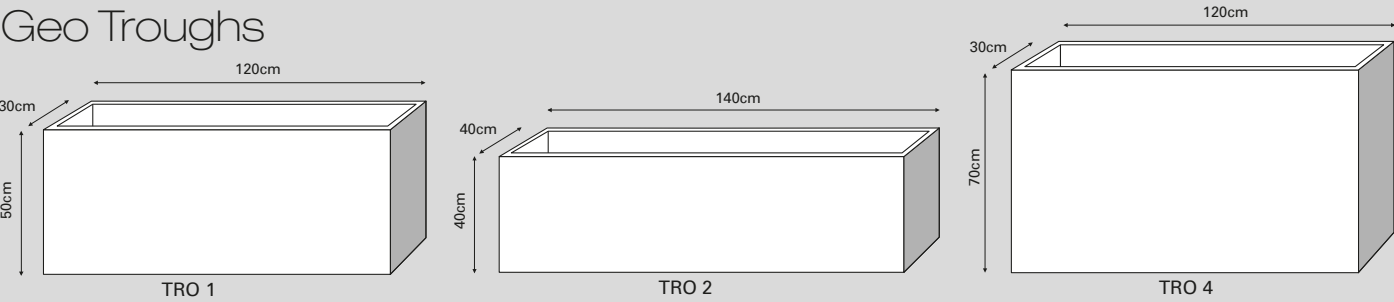
Geo Square Planters



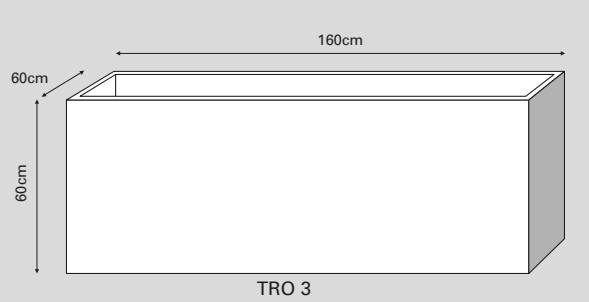
Geo Windoboxes



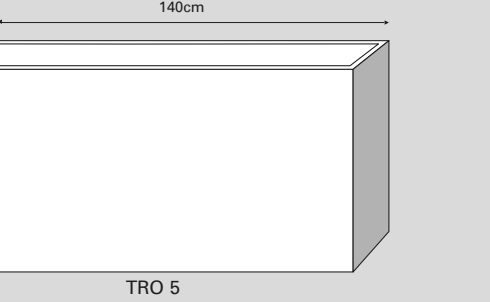
Geo Troughs



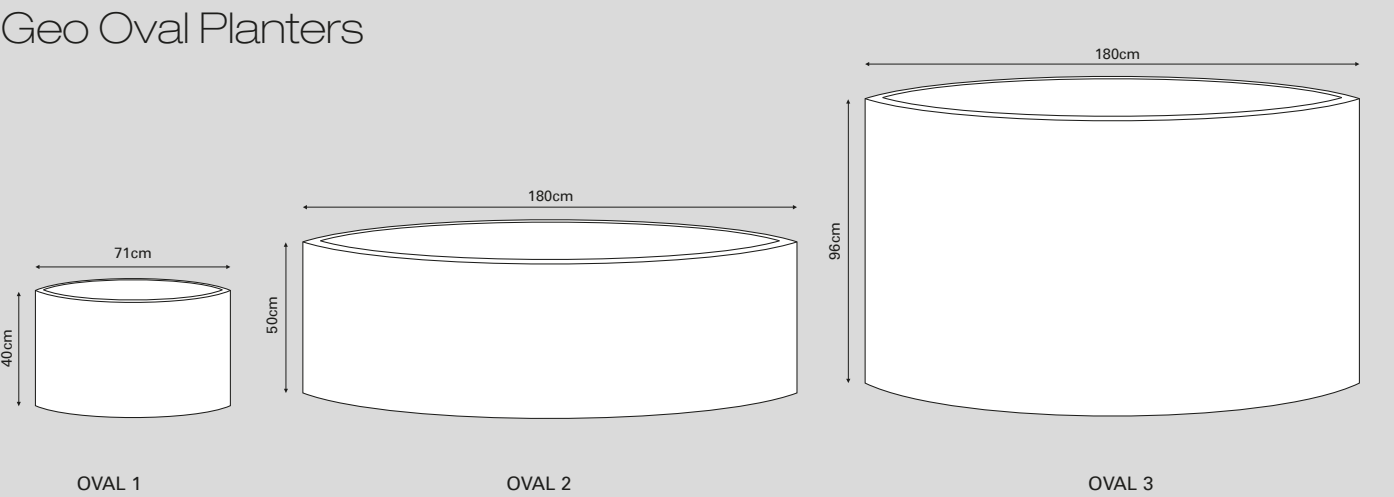
Geo Square Planters



Geo Windoboxes



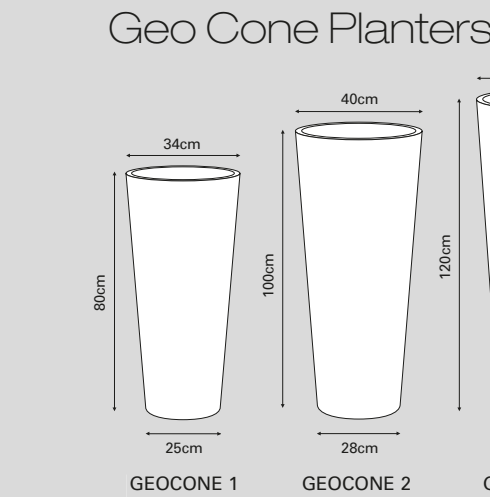
Geo Oval Planters



Geo Classic Planters

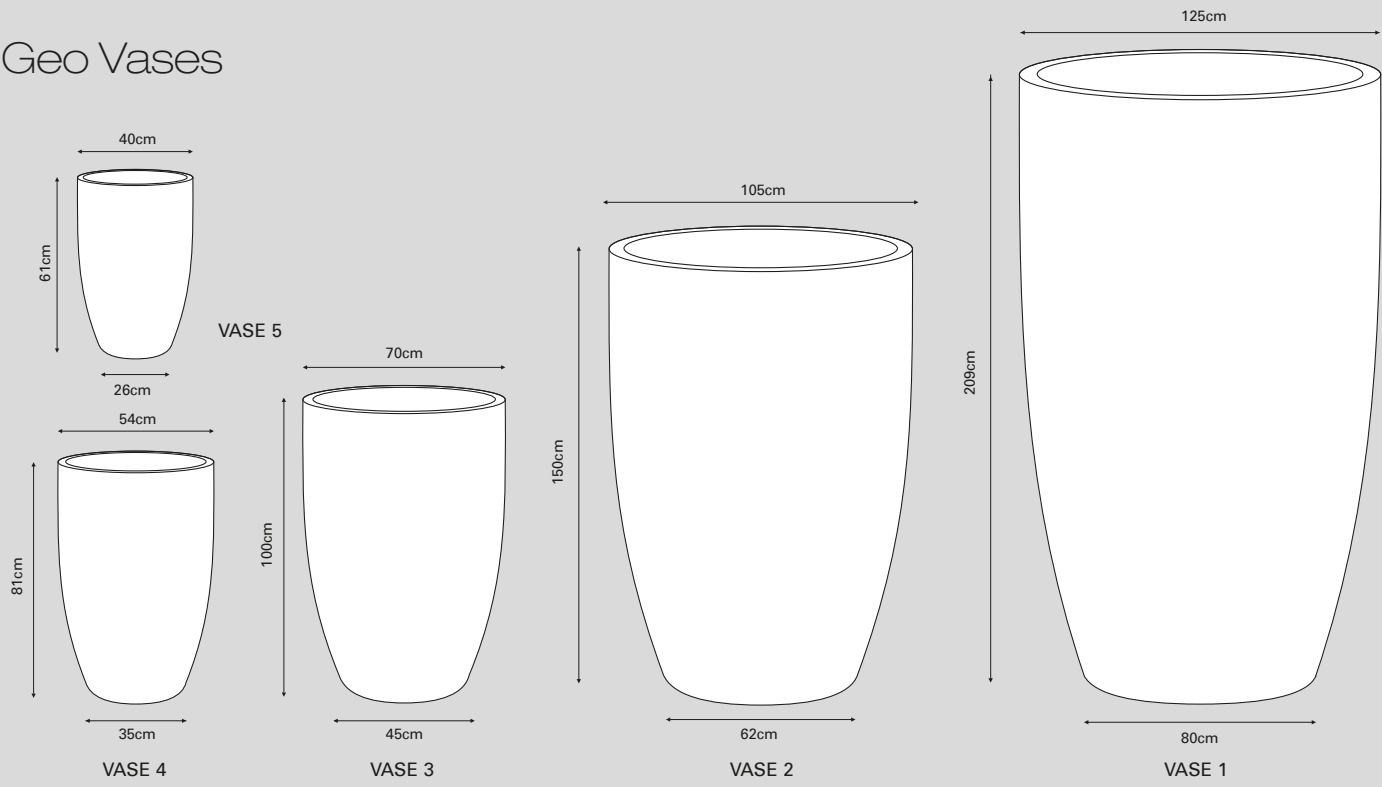


Geo Cone Planters

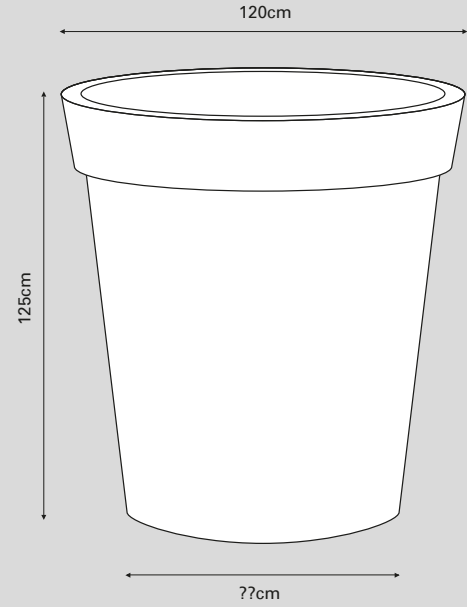




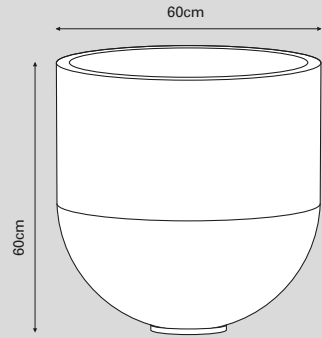
Geo Vases



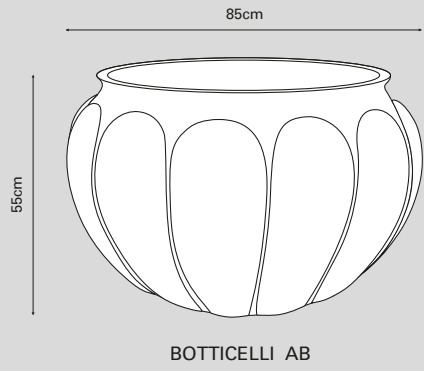
Bollinger Planter



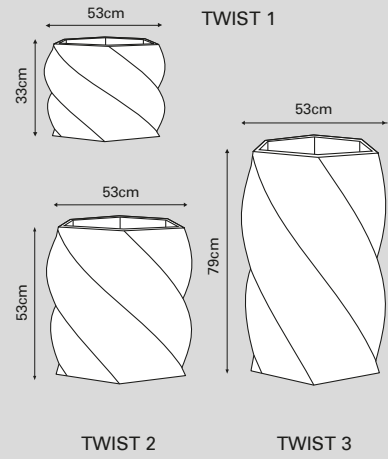
Bullet Planter



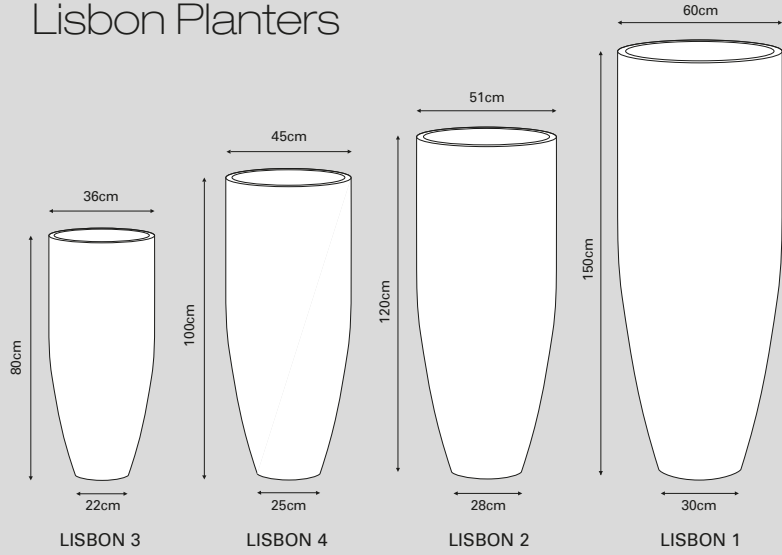
Botticelli Planter



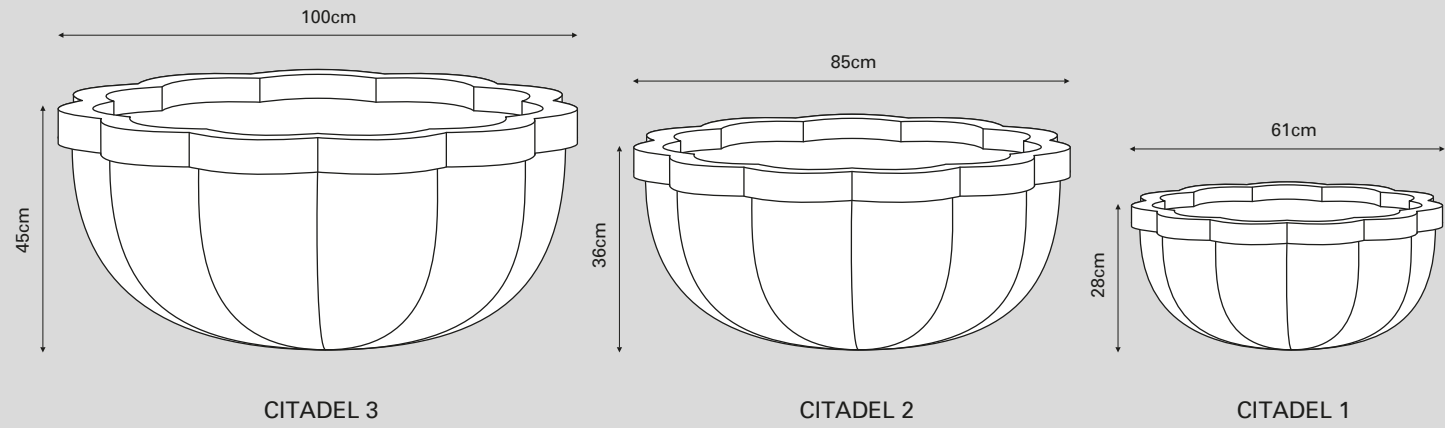
Twist Planters



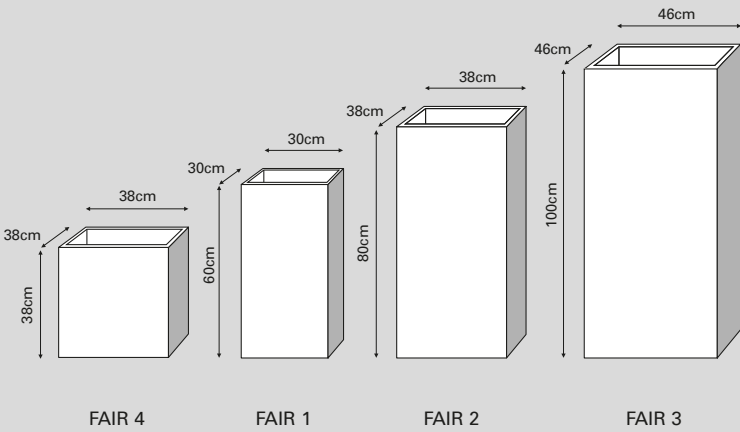
Lisbon Planters



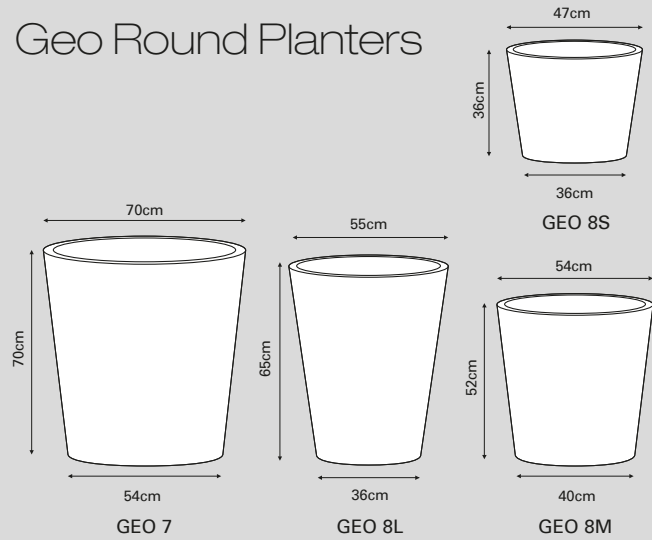
Citadel Planters



Fairhaven Planters



Geo Round Planters



Geo Bowls





# Accessories



## Water reservoirs

A proven design used commercially in the trade for many years. The tank is placed 45cm below the roots and water is released by capillary action. They are easy to fill and have an integral water level indicator. Use individually or link for larger planting. For advice please call.



## Brackets

We supply smart, black powder-coated metal brackets to fit the majority of our window boxes. These are adjustable and can be used for hanging window boxes against walls, balconies and railings. The discrete lip at the front ensures the window boxes stay in place in any weather.



## Lighting

Working closely with a number of leading outdoor lighting manufacturers, we can fit lights into most of our planters or fountains. Lighting creates an inviting, atmospheric mood, as well as a practical solution for lighting a garden at night.



## Taps

Brass taps can be fitted to all tanks and planters to make filling a watering can an easy task. The taps can be placed in any position to your specification.

## False Floors

A useful addition to many of our planters is our ability to add a false floor at any level so that the planting depth can be reduced. Superb for flower arranging, exhibitions and temporary displays (we use them at all our exhibitions). Specify your requirements or speak with our team of experts.



## Pallet Bases

We can raise or insert bases into our larger, heavier planters to enable them to be moved more easily by forklift or by pallet truck.



## Hidden Wheels

Concealed within the base, they are a very useful addition to larger planters. They enable tender plants to be moved easily. They facilitate cleaning and provide an option for moveable living screens in any setting. We supply a variety of wheels (with or without brakes) and offer a bespoke solution for any situation.



## Adaptations...

- Lids for troughs and water tanks (Europe only)
- Drip trays for all planters
- Trellis and screens
- Felt feet and rubber mats available to protect floors or carpets
- Drainage holes can be drilled on request

## Office and Showroom

Capital Garden Products Ltd  
Gibbs Reed Barn  
Pashley Road  
Ticehurst  
East Sussex TN5 7HE  
United Kingdom



## Orders, Quotes & Queries

PHONE +44 (0) 1580 201092  
EMAIL [sales@capital-garden.com](mailto:sales@capital-garden.com)

[www.capital-garden.com](http://www.capital-garden.com)







**CAPITAL**  
GARDEN PRODUCTS

**Capital Garden Products Ltd**  
Gibbs Reed Barn  
Pashley Road  
Ticehurst  
East Sussex TN5 7HE  
United Kingdom

PHONE +44 (0) 1580 201092  
FAX +44 (0) 1580 201093  
EMAIL [sales@capital-garden.com](mailto:sales@capital-garden.com)  
WEB [capital-garden.com](http://capital-garden.com)